

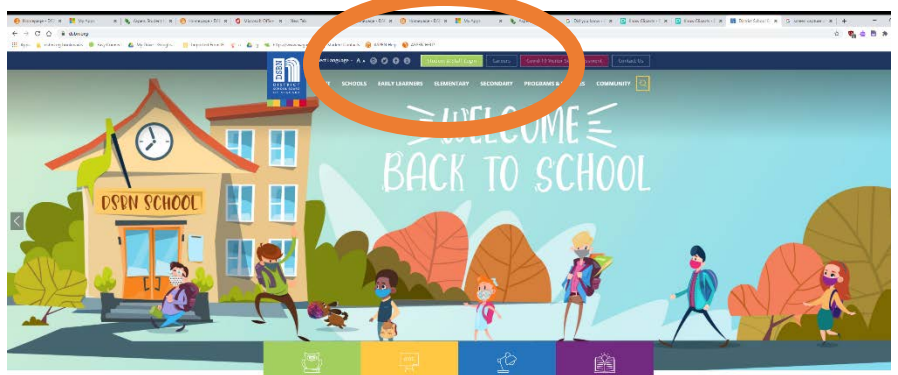
# HERE'S HOW:

All E.L. Crossley students will use online learning this semester. Teachers have set up online classes in either D2L or Google Classroom.

## Logging on to Online Learning

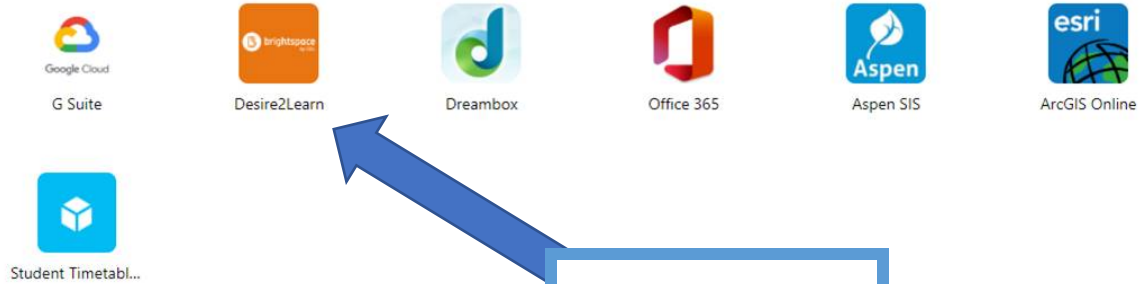
- To Log on to D2L Visit [dsbn.org](https://dsbn.org)

CLICK HERE



- Enter you Username + Password
  - Username: You DSNB Email. Username@students.dsnb.org
  - Password: Your DSNB Password that you use to log in to school computers.
  - If you need a **PASSWORD RESET**, click on the Student Password Reset button on our website (<https://elcrossley.dsnb.org/>)
- **IF YOU ARE STILL HAVING A PROBLEM CALL THE SCHOOL: 905-892-2635**

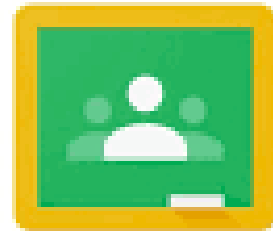




Click Here for D2L

## Logging on to Online Learning

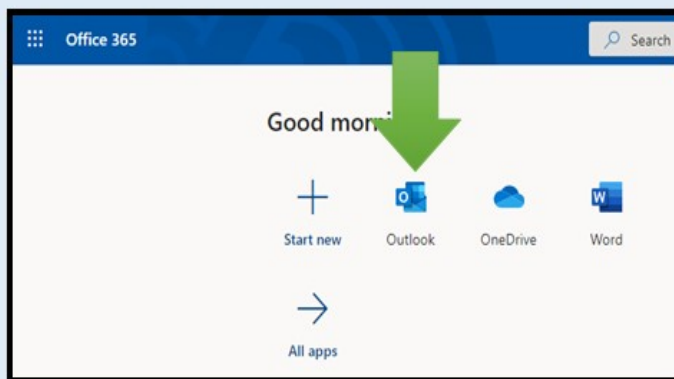
- **To Log on to Google Classroom**
- Check out your Student Outlook email for log on information. Teachers have sent a Welcome message for courses being delivered via Google Classroom.
- How to check your Student Outlook email can be found below.



Google Classroom

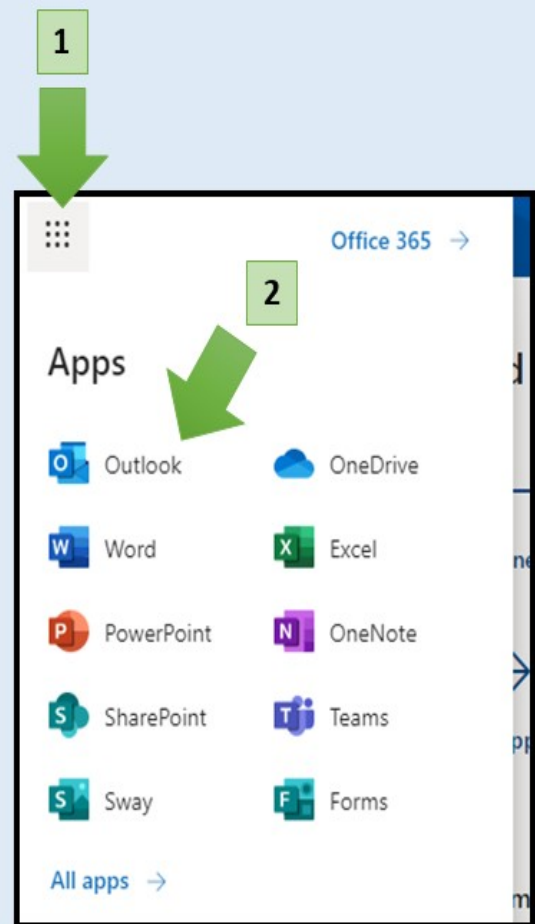
## Accessing your Student Outlook Email

### Accessing Outlook email



If your teacher is using **Google Classroom**, you may find log-in instructions through your DSNB Outlook email account to your class. Here are instructions for accessing Outlook...

1. Open a browser (ie. Google Chrome) and type **office.dsnb.org**
2. Log-in with your username and password
3. Select **Outlook**
4. Check for an email from your teacher



# LOOKING FOR EXTRA HELP?



## Direct Connect - Synchronous Support for Students:

- “Direct Connect” in D2L will connect students with teachers in all subject areas from 10:00 am - 2:00 pm for help if they are stuck and their classroom teacher is unavailable to provide them with assistance
- Students simply need to click on the appropriate course icon once they have logged into D2L



## ONLINE COHORT: FOR OUR FULLY ONLINE LEARNERS

Those students who are fully online must sign into their D2L grade homeroom each day for attendance and announcements. These homerooms can be found on your D2L homepage.



### Daily Check In Times

Grade 9: 10:00am – 10:30am

Grade 10: 10:30am – 11:00am

Grade 11: 10:30am – 11:00 am

Grade 12: 10:00am – 10: 30am